



What's New - Sage Accpac Extended Enterprise Suite

The Sage Accpac Extended Enterprise Suite lets you see your vital Sage Accpac data right from within the SageCRM application, giving you a complete picture of your customers and your sales and marketing data without having to switch applications.

What's New in Sage Accpac 5.5:

Feature	Description	Benefit
Dashboards	Up-to-date snapshots of your company's financial and operational status	Allows executives to make better-informed, more timely decisions
Sage FAS Link	Integrate Sage Accpac purchase orders or accounts payables	Easily track fixed asset purchases and ongoing monthly depreciation entries
General Ledger Account Rollup*	Lets users create relationships between accounts	Saves time and resources, minimizes errors, and allows for easier account reconciliation and consolidation
Multicurrency Revaluation	Choose currency revaluation methods based on different international standards	Ensures compliance with currency translation standards enforced in different countries
Multiple Customer Billing (PJC)	Invoice multiple parties to one contract for different facets of work	Keep control of your project costs, billing, and accounts receivables, even if you have to bill multiple customers for the same job

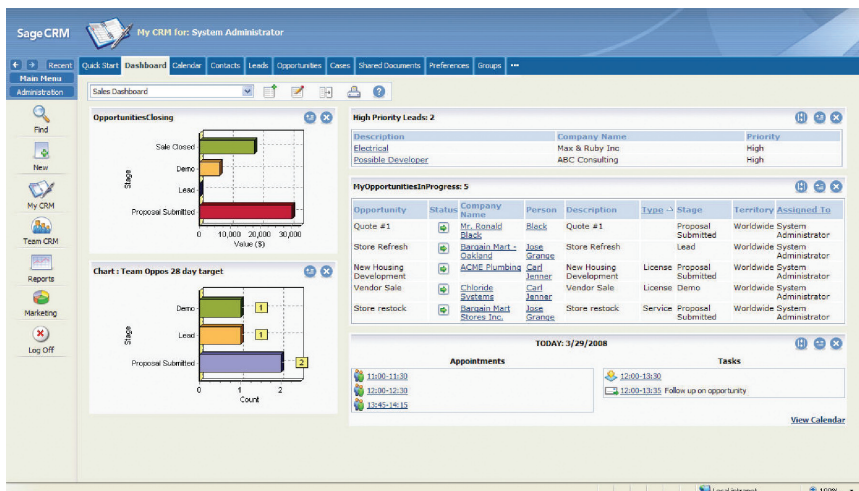
*Available only in 500 Edition



Accounts Payable, receivable and Sales Analysis dashboards

What's New in SageCRM? It's now part of the Sage Accpac Extended Enterprise Suite!

Feature	Description	Benefit
SageCRM Integration	<p>Bidirectional data flow between Sage Accpac and SageCRM:</p> <ul style="list-style-type: none"> You can now share AP, AR, and aging and statistics information Analyze and update Sage Accpac data in SageCRM Create customer account documents from within SageCRM Synchronize billing and shipping information 	Users will benefit from the bidirectional flow of data between Sage Accpac and SageCRM to manage customer interactions more effectively
Microsoft Outlook® Integration	<p>SageCRM offers in-depth integration with Microsoft Outlook:</p> <ul style="list-style-type: none"> New wizard-driven Outlook plug-in for easy deployment Improved synchronization Meeting organizer displayed on the SageCRM meeting screen Improved multi-user appointment scheduling New e-mail button to allow users to immediately respond to their 	Users will benefit the seamless integration with Microsoft Outlook, giving them the power to manage e-mail and schedules more efficiently
Enhanced SageCRM Calendar	The Day View in the SageCRM calendar has been redesigned to allow side-by-side display of overlapping appointments	Calendar interface is easier to use, and displays information more accurately
Customization Capabilities	With the new Delete Field option, SageCRM developers and administrators can delete custom fields through the user interface without having to create code. And they can add new buttons or customize existing ones in the work area	System administrators now have the ability to further customize SageCRM to reflect their organizations' unique business processes, making the system easier for all users
Windows Vista and Office 2007 Compatibility	SageCRM is compatible with Windows Vista and Microsoft Office 2007.	Sage CRM works with the latest Microsoft products and supports Microsoft Office.
Quotes and Orders	Find Quotes and Orders information faster using expanded search criteria. You can even customize quotes and orders with your own notes and comments	Advanced search capabilities allow users to find, group, and manage Quotes and orders faster using a variety of search criteria.
Compatible With a 64-bit Operating System	It is now possible to easily install SageCRM on a 64-bit Microsoft Windows 2003 server.	Offers organizations the flexibility of using either 32-bit or 64-bit servers.



View all of your important daily sales information with the SageCRM dashboard

What's New in Sage Accpac 5.5 Detailed

System Manager	100	200	500
Additional languages - included	✓	✓	✓
Ability to enter taxes on entries in Bank Reconciliation and on Bank Transfer service charges	✓	✓	✓
Ability to print Payment Register	✓	✓	✓
Integrated Dashboards	✓	✓	✓
General Ledger	100	200	500
Account Rollup in G/L			✓
Account Code Change and G/L Security by Segments - included	✓	✓	✓
New revaluation methods to meet the International Foreign Exchange Reporting Standards for GAAP for exchange gain and losses	✓	✓	✓
10 New Sample FR Specs	✓	✓	✓
Accounts Payable	100	200	500
Vendor Number Change - included	✓	✓	✓
New revaluation methods to meet the International Foreign Exchange Reporting Standards for GAAP for exchange gain and losses	✓	✓	✓
Ability to enter advanced credits (similar to AR feature)		✓	✓
Ability to specify job information (contract, project, category, and resource) on recurring payables.	✓	✓	✓
Enhance Aged/Overdue Payables, Aged Cash, Vendor Transactions, and Aged Retainage reports: option to subtotal each sort/group by, show group headers on report, option to suppress paid documents.	✓	✓	✓
Accounts Receivable	100	200	500
AR Inquiry and Customer Number Change - included	✓	✓	✓
New revaluation methods to meet the International Foreign Exchange Reporting Standards for GAAP for exchange gains and losses	✓	✓	✓
Ability to specify job information (contract, project, category, and resource) on recurring charges	✓	✓	✓
Enhance Aged Trial Balance, Customer Transactions, Aged Retention reports: option to subtotal each sort/group; show group headers on reports, select transaction types to be shown, or to suppress paid documents.	✓	✓	✓
Ability to launch A/R Inquiry option product from A/R Invoice Entry (if the correct version installed, the user has a license, and is not running it in a browser)	✓	✓	✓

What's New in Sage Accpac 5.5 Detailed

Inventory Control	100	200	500
Item Number Change - included	✓	✓	✓
Ability to specify start and end dates for price lists	✓	✓	✓
Ability to internally consume inventory (including FAS integration)	✓	✓	✓
Ability to inquire about the quantity on sales order, quantity on purchase order, and committed quantity in Location Details	✓	✓	✓
Split up of Day End to allow just Costing during Posting	✓	✓	✓
Order Entry	100	200	500
Ops Inquiry - included	✓	✓	✓
Integration with Project and Job Costing	✓	✓	✓
Ability to calculate backordered quantities based on customer options	✓	✓	✓
Prepayments on shipments	✓	✓	✓
Ability to inquire on items that are expected to be shipped within a specified date range	✓	✓	✓
Ability to inquire or print a report that lists the orders that have an item that has a committed quantity	✓	✓	✓
Purchase Orders	100	200	500
Ability to specify costs on Requisitions	✓	✓	✓
Ability to copy Purchase Orders like the Order Entry feature Copy Orders	✓	✓	✓
Ability to inquire and print a report showing the date an item is expected to be received and the number of days exceeded if the item was not received on the expected date	✓	✓	✓
FAS Integration for Receipts	✓	✓	✓
Payroll	100	200	500
eFile for Canadian Payroll - included	✓	✓	✓
Employee Activity Enhancement for Accruals	✓	✓	✓
Employee Timecards (vacation/sick time entry)	✓	✓	✓
Enhanced integration link from Sage HRMS 8.2 and 8.3 to Payroll	✓	✓	✓
Project & Job Costing	100	200	500
TimeCard user licenses - included	✓	✓	✓
Ability to specify customer at the project level in PJC, plus ability to change a customer	✓	✓	✓
OE/PJC Integration	✓	✓	✓
Serialized Inventory and Lot Tracking Integration in Material Usage and Return	✓	✓	✓
Respect I/C UOM set in Contract Maintenance for Material cost-type	✓	✓	✓
Ability to use customer's price list for Material Usage, Return transactions	✓	✓	✓

SAGE ACCPAC

Sage Software supports the needs, challenges, and dreams of 2.8 million small and mid-sized business customers in North America through easy-to-use, scalable and customizable software and services. Sage Software is a subsidiary of The Sage Group plc, a leading international supplier of business management software and services formed in 1981 and listed on the London Stock Exchange since 1989.

© 2008 Sage Software Inc. Sage Software and Sage CRM Solutions are registered trademarks of Sage Software, Inc. All rights reserved. All other trademarks and copyrights are the property of their respective holders. 08-08570

End-to-end solutions. Expert advice. Premium support. That's Sage 360°.